



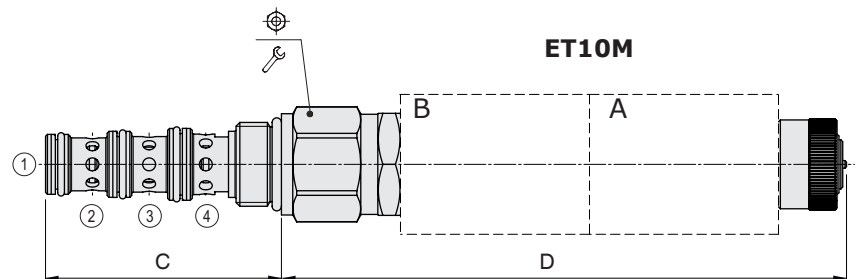
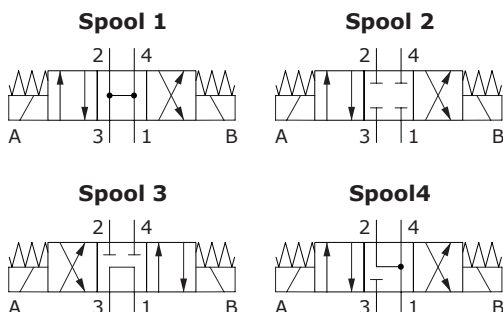
ET..M type directional solenoid valve - 4 way / 3 positions

- Direct acting
- Spool type
- From SAE08 to SAE10 cavities

Technical specifications and diagrams are measured with mineral oil of 46 cSt viscosity at 40°C (104°F) temperature.

	ET08M	ET10M
Nominal flow	18 l/min (4.7 US gpm)	40 l/min (10.5 US gpm)
Max. pressure	210 bar (3050 psi)	
Oil leakage	at 210 bar (3050 psi) 40 cm ³ /min (2.44 in ³ /min)	80 cm ³ /min (4.88 in ³ /min)
Fluid	mineral based oil	
Viscosity	10-200 cSt	
Max level of contamination	18/16/13 ISO4406	
Fluid temperature	with NBR seals with FPM seals	from -20°C (-4°F) to 80°C (176°F) from -20°C (-4°F) to 100°C (212°F)
Environmental temp. for working conditions	from -20°C (-4°F) to 50°C (122°F)	
Cavity	SAE 08/4	SAE 10/4
Coils type*	BER	BC
Nominal voltages	12 VDC - 24 VDC ± 10%	12 VDC - 24 VDC ± 10%
Power rating	22.8 W (12 VDC) - 22.5 W (24 VDC)	26.1 W (12 VDC) - 25.9 W (24 VDC)
Weight	0.25 kg (0.44 lb)	0.45 kg (1.10 lb)

NOTE - For different conditions, please contact Walvoil Sales Dpt. - *For coils further features see from page 206.

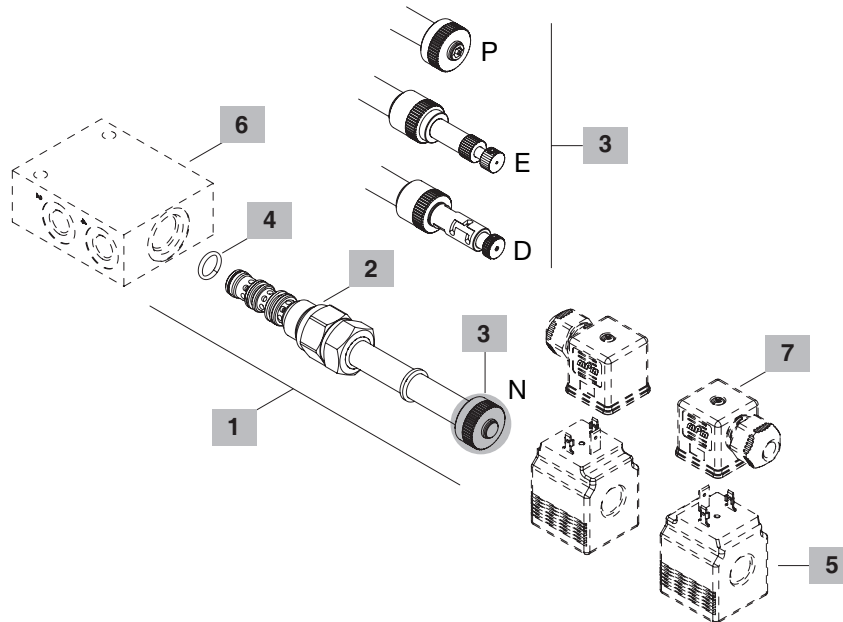
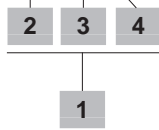


Valve type	C		D			
	mm	in	mm	in		
ET08M/..NB	53.6	2.11	120	4.72	24	30 22
ET10M/..NB	62.4	2.46	148.5	5.85	27	50 37

For dimensions with different type of emergency see page 213

Ordering codes and description composition

ET08M/10 NB



1 Cartridges

TYPE	CODE	DESCRIPTION
SAE cavity 08/4		
ET08M/10NB	0ET08002017	Without emergency, spool 1
ET08M/20NB	0ET08002019	Without emergency, spool 2
ET08M/30NB	0ET08002020	Without emergency, spool 3
ET08M/40NB	0ER08002018	Without emergency, spool 4
SAE cavity 10/4		
ET10M/10NB	0ET10002023	Without emergency, spool 1
ET10M/20NB	0ET10002024	Without emergency, spool 2
ET10M/30NB	0ET10002025	Without emergency, spool 3
ET10M/40NB	0ET10002026	Without emergency, spool 4

2 Spool

TYPE	DESCRIPTION
1	Spool 1
2	Spool 2
3	Spool 3
4	Spool 4

3 Emergency

TYPE	DESCRIPTION
N	Without emergency
E	Pull/push-button type
D	Detent push/pull type
P	Push-button type

4 Seals

TYPE	DESCRIPTION
B	NBR (Buna) o-ring seals, std configuration
V	FPM (Viton) o-ring seals, contact Sales Dept.

5 Coils

TYPE	CODE	DESCRIPTION
BER 12VDC	4SLE001200	12VDC-ISO4400 coil for ET08M
BC 12VDC	4SL8000120	12VDC-ISO4400 coil for ET10M

For complete coils list see from page 206

6 Valve body

TYPE	CODE	DESCRIPTION
SAE 08/4-G 3/8	3CC0840C11	Aluminium body for cavity 08 valve, G 3/8 std thread
SAE 10/4-G 3/8	3CC1040C11	Aluminium body for cavity 10 valve, G 3/8 std thread

For steel bodies or different threading see from page 219

7 Connector

TYPE	CODE	DESCRIPTION
ISO4400	4CN1009995	Connector

For complete connectors list see from page 206

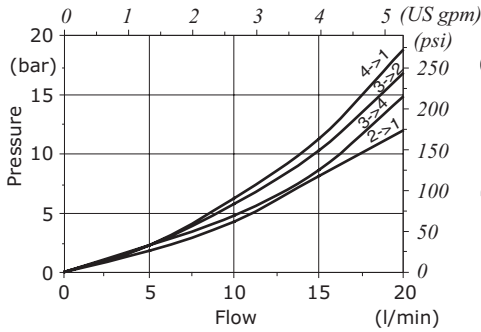
Directional control valves

Directional solenoid valves - 4 way / 3 positions

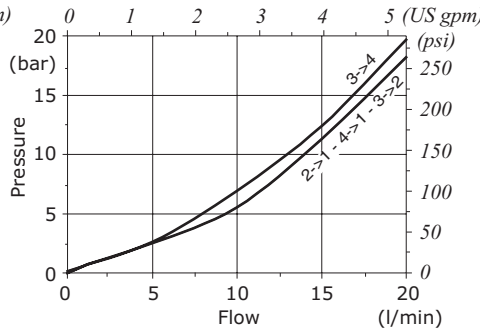
ET..M type

Rating diagrams

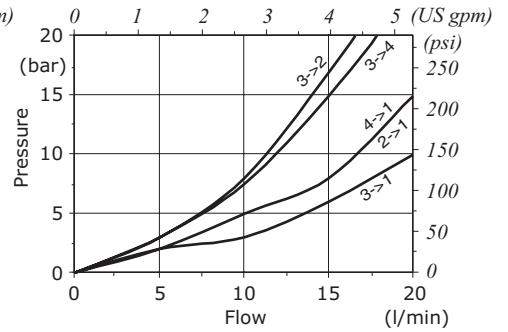
ET08M pressure drop vs. flow
- Spool 1 -



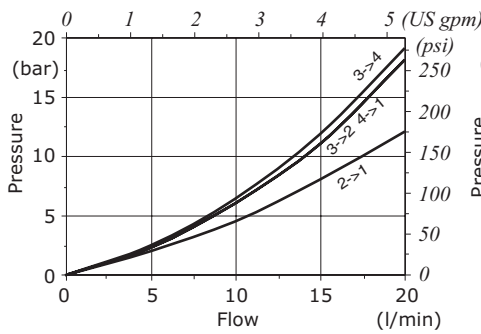
ET08M pressure drop vs. flow
- Spool 2 -



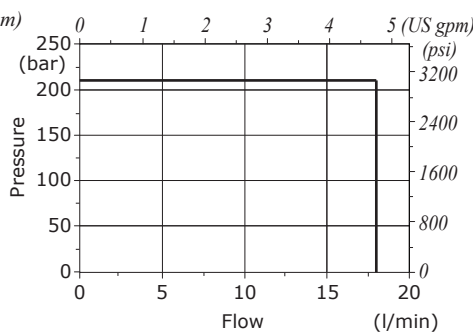
ET08M pressure drop vs. flow
- Spool 3 -



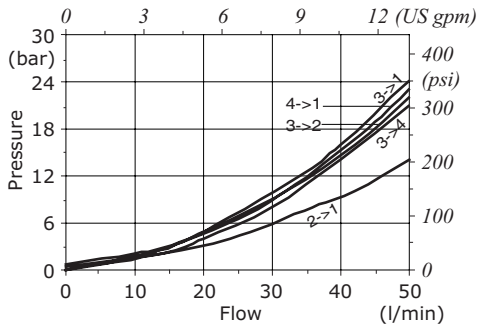
ET08M pressure drop vs. flow
- Spool 4 -



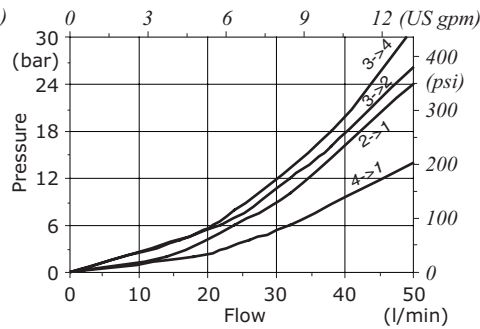
ET08M performance limit



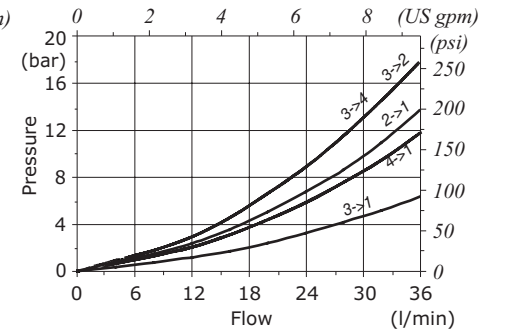
ET10M pressure drop vs. flow
- Spool 1 -



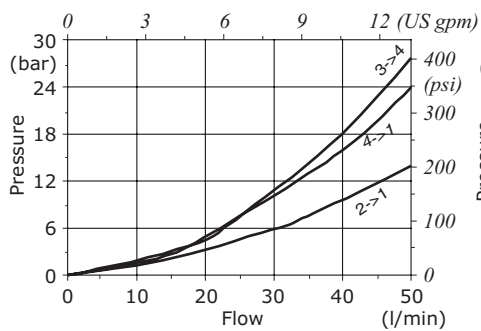
ET10M pressure drop vs. flow
- Spool 2 -



ET10M pressure drop vs. flow
- Spool 3 -



ET10M pressure drop vs. flow
- Spool 4 -



ET10M performance limit

