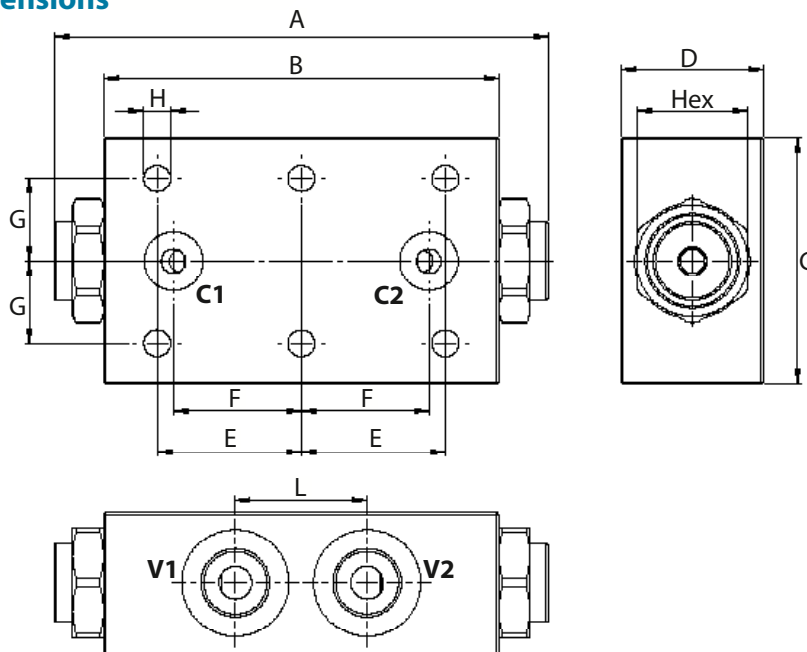


# LVDF

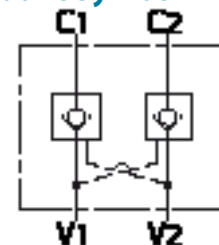
## DUAL PILOT CHECK VALVE - FLANGEABLE

### Dimensions

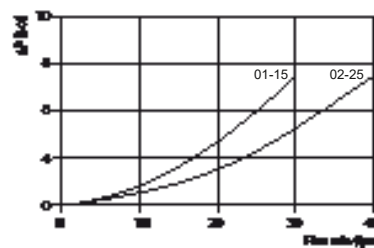
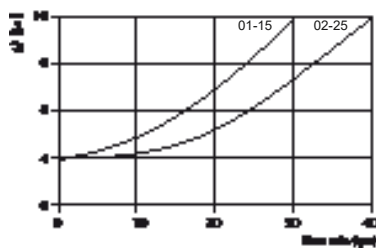


Size	V1-V2 BSP	A	B	C	C1-C2	D	E	F	G	H	L	Hex	Weight kg
01	1/4	113	90	50	Ø 5	30	35	26	20	6,5	32	22	0,43
15	3/8	113	90	50	Ø 5	30	35	26	20	6,5	32	22	0,43
02	3/8	113	96	60	Ø 6	35	35	31	20	6,5	32	27	0,60
25	1/2	113	96	60	Ø 6	35	35	31	20	6,5	32	27	0,60

### Hydraulic Symbol



### Curves



### Features

Size	01	15	02	25
Max Pressure (bar)	260	260	260	260
Max Flow (lpm)	20	20	35	35
Pilot Ratio	1:4	1:4	1:7	1:7
Cracking Pressure (bar)	4	4	4	4

**Materials:** Aluminium manifold, hardened steel inner parts.

### Ordering Code

**LVDF**    --

Size BSP	
01	1/4
15	3/8
02	3/8
25	1/2

**Ordering Code Example:** LVDFV15 = 3/8 BSP, 20 lpm.