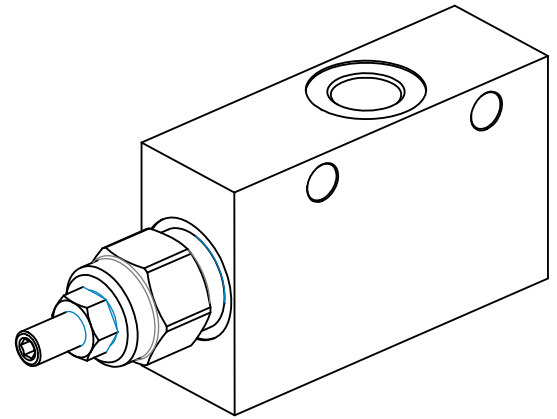
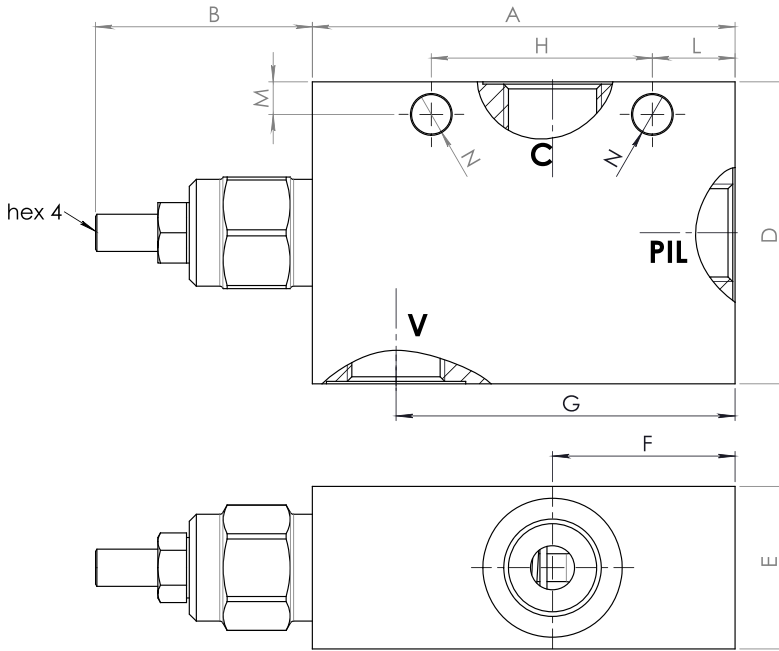
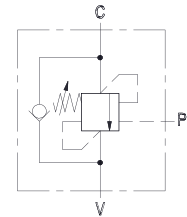


Dimensions

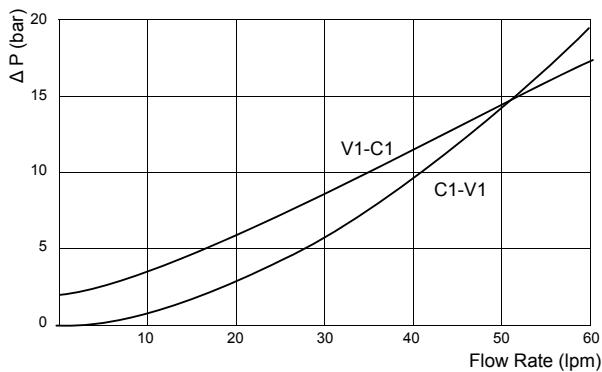


Size	A	B	C-V-PIL BSP	D	E	F	G	H	L	M	N	Weight kg
02	91	47	3/8	55	30	39,3	70,3	47,6	17,8	7	8,5	1,18
03	91	47	1/2	65	35	39,3	70,3	47,6	17,8	11	8,5	1,50

Hydraulic Symbol



Curves



Features

Rated Flow	60 lpm
Max Pressure	350 bar

Materials: Zinc plated steel manifold, hardened steel inner parts.

Notice: Relief setting at least 1,3 times the highest expected load-induced pressure.

Ordering Code

CBSEP -- -- -

	Port Size BSP	Spring		
		Pressure Range (bar)	Increase (bar/turn)	Standard Setting (bar) Q=5 lpm
02	3/8			
03	1/2			
20		60 - 210	61	180
30		100 - 350	100	250

Pilot Ratio	
	4,2 : 1
8	8 : 1

Ordering Code Example: **CBSEP0330** = 1/2 BSP Ports - 100-350 bar setting range, 4,2:1 Pilot Ratio.