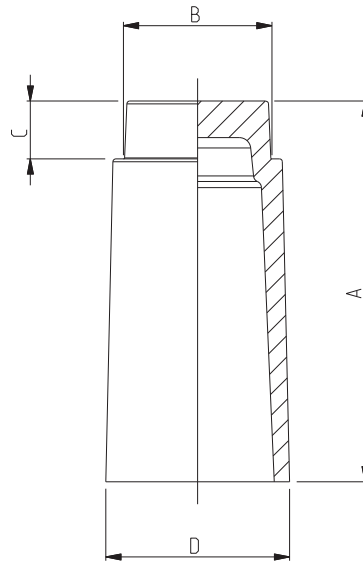


## ELEMENT'S DIMENSIONS FOR HF 705



ICAT\_016\_003\_HF705

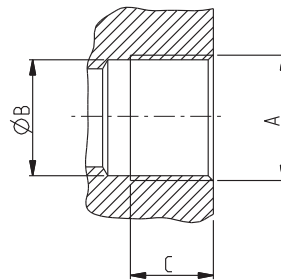
Element type	A	Ø B	C	Ø D
	mm (in)	mm (in)	mm (in)	mm (in)
<b>HE K80-10.040</b>	39 (1.5354)	21 (0.8268)	10 (0.3937)	25,5 (1.0039)
<b>HE K80-20.070</b>	68 (2.6772)	25,5 (1.0039)		32 (1.2598)

## PORTS IN/OUT

## GAS STRAIGHT THREAD PORTS

BSPP

British standard pipe parallel (55°) conforms to UNI - ISO 228



ICAT\_011\_008\_HF760

CODE	Nominal size	A	Ø B	C	Nm (lbf in)
			mm (in)	mm (in)	
<b>GB</b>	1/4"	G 1/4	12,5 (0.4921)	14,0 (0.5512)	15 <sup>+1</sup> (133 ÷ 142)
<b>GC</b>	3/8"	G 3/8	16,0 (0.6299)	14,0 (0.5512)	25 <sup>+1</sup> (221 ÷ 230)
<b>GD</b>	1/2"	G 1/2	20,0 (0.7874)	16,0 (0.6299)	50 <sup>+2,5</sup> (443 ÷ 465)
<b>GE</b>	3/4"	G 3/4	25,5 (1.0324)	18,0 (0.7087)	90 <sup>+2,5</sup> (797 ÷ 841)

02/12.2010