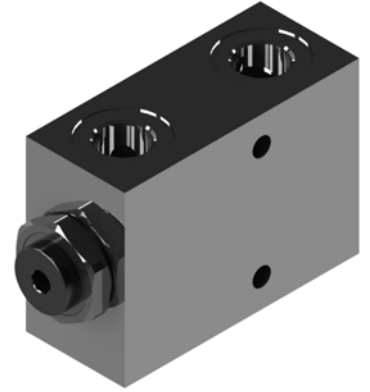
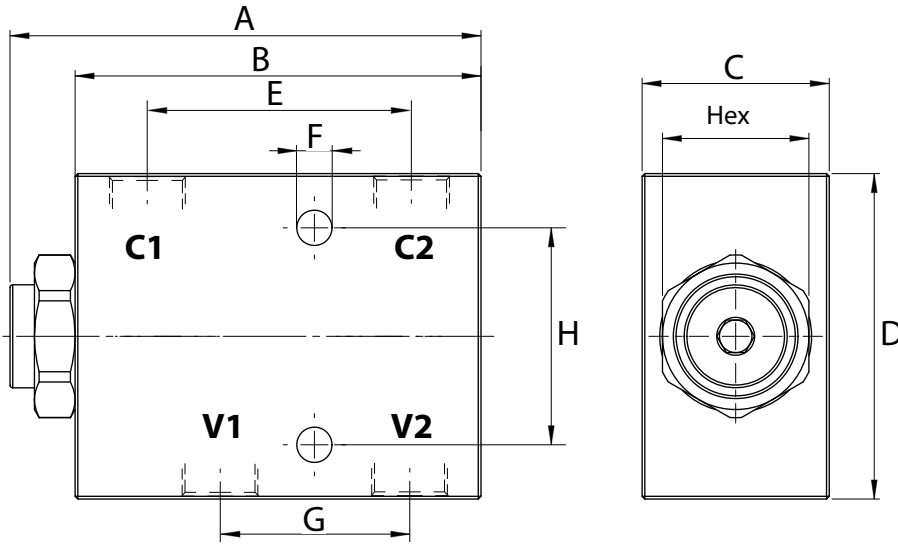
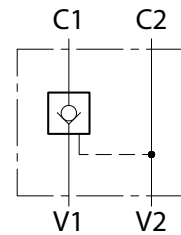


Dimensions

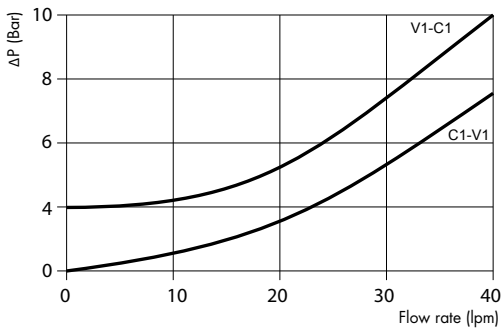


Size	C1-C2 V1-V2 BSP	A	B	C	D	E	F	G	H	Hex	Weight kg
02	3/8	95	83	35	60	49	6,5	32	40	27	0,52
25	1/2	95	83	35	60	49	6,5	32	40	27	0,48

Hydraulic Symbol



Curves



Features

Size	02	25
Max Pressure (bar)	260	260
Max Flow (lpm)	35	35
Pilot Ratio	1:7	1:7
Cracking Pressure (bar)	4	4

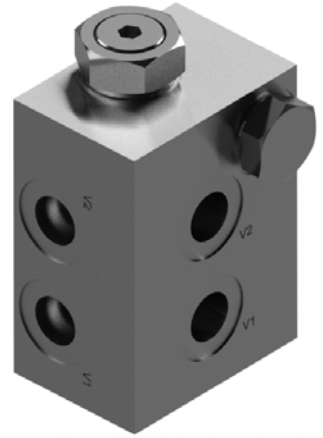
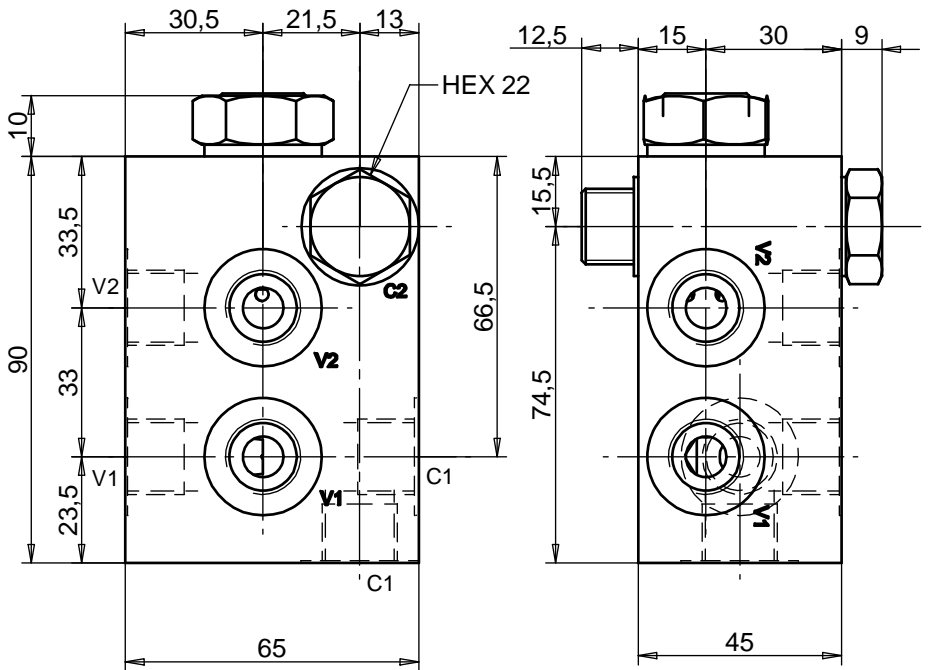
Materials: Aluminium manifold, hardened steel inner parts.

Ordering Code

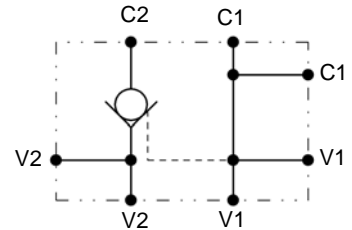
LVSL	- -
	Size BSP
02	3/8
25	1/2

Ordering Code Example: LVSL02 = 3/8 BSP, 35 lpm.

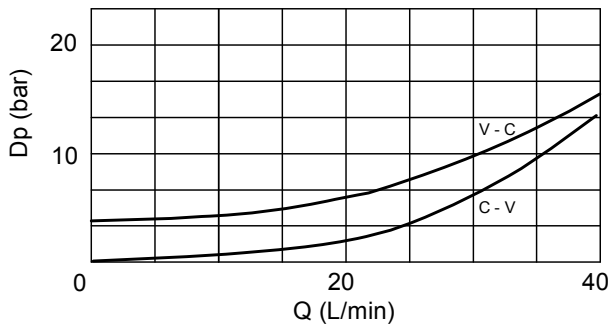
Dimensions



Hydraulic Symbol



Curves



Features

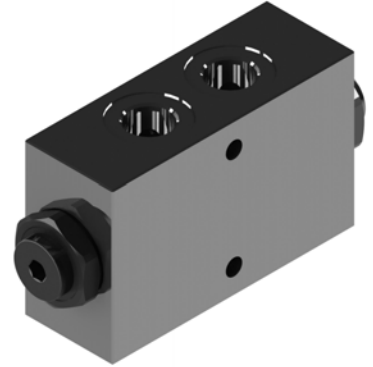
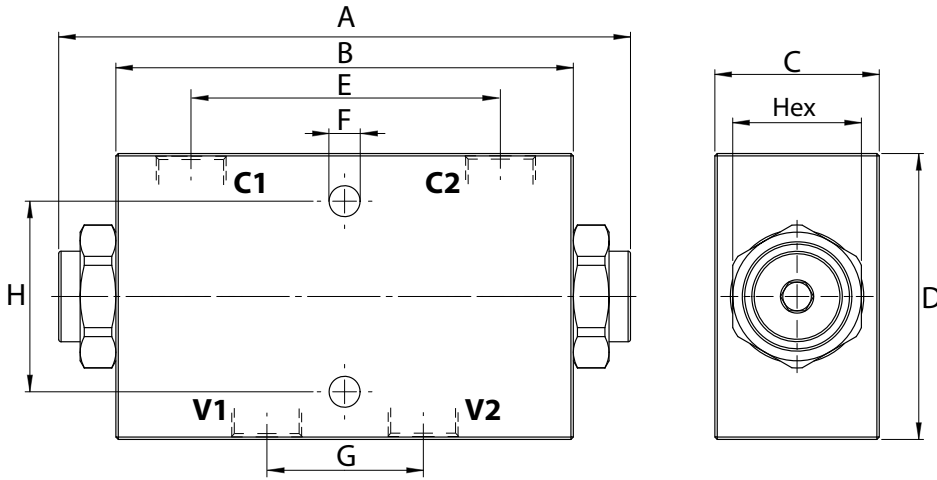
Max Pressure (bar)	350
Max Flow (lpm)	40
Pilot Ratio	3,4:1
Cracking Pressure (bar)	4
Ports	3/8 bsp

Materials: Zinc plated steel cartridge, hardened steel inner parts.
Aluminium manifold.

Ordering Code

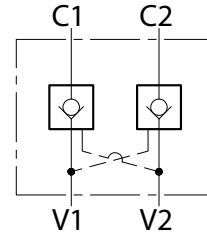
LVPCF

Dimensions



Size	C1-C2 V1-V2 BSP	A	B	C	D	E	F	G	H	Hex	Weight kg
01	1/4	113	90	25	50	62	6,5	32	40	22	0,79
15	3/8	113	90	25	50	62	6,5	32	40	22	0,76
02	3/8	113	96	35	60	62	6,5	32	40	27	0,62
25	1/2	113	96	35	60	62	6,5	32	40	27	0,60
03	1/2	140	110	35	70	69	8,5	34	40	30	0,89
04	3/4	220	165	50	90	105	8,5	50	60	41	2,550

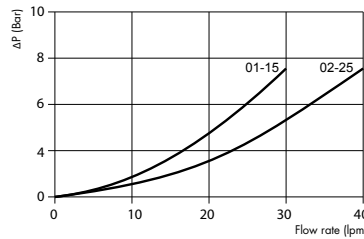
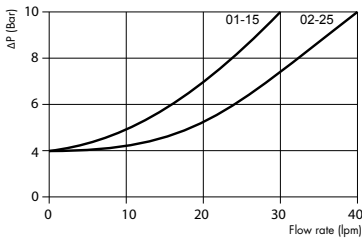
Hydraulic Symbol



Curves

V1 → C1
V2 → C2

C1 → V1
C2 → V2



Features

Size	01	15	02	25	03	04
Max Pressure (bar)	260	260	260	260	260	260
Max Flow (lpm)	20	20	35	35	60	100
Pilot Ratio	1:4	1:4	1:7	1:7	1:3,4	1:4
Cracking Pressure (bar)	4	4	4	4	3	8

Materials: Aluminium manifold, hardened steel inner parts.

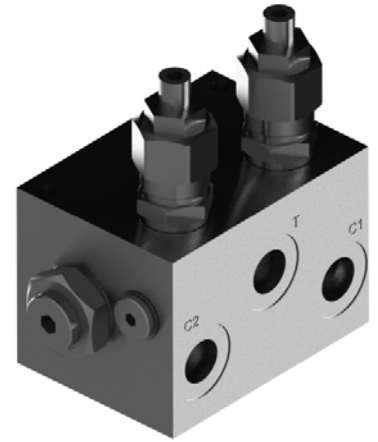
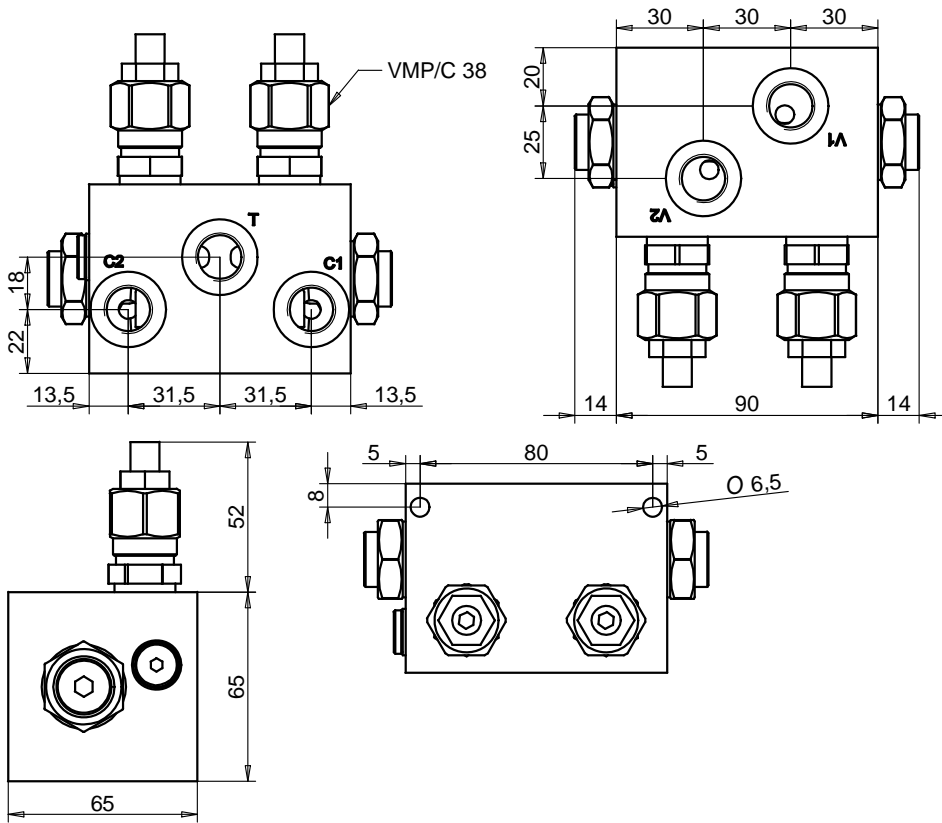
Ordering Code

LVDL --

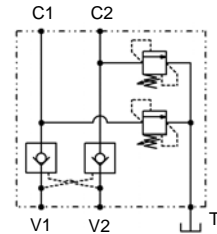
	Size BSP
01	1/4
15	3/8
02	3/8
25	1/2
03	1/2
04	3/4

Ordering Code Example: LVDL15 = 3/8 BSP, 20 lpm.

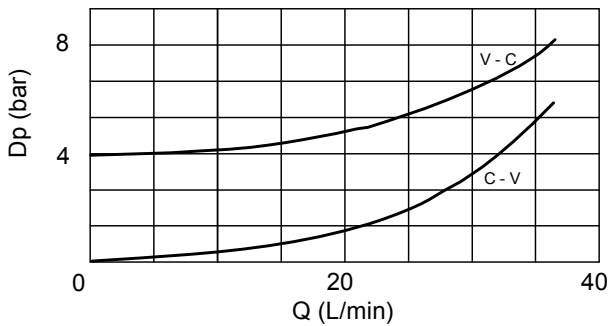
Dimensions



Hydraulic Symbol



Curves



Materials: Aluminium

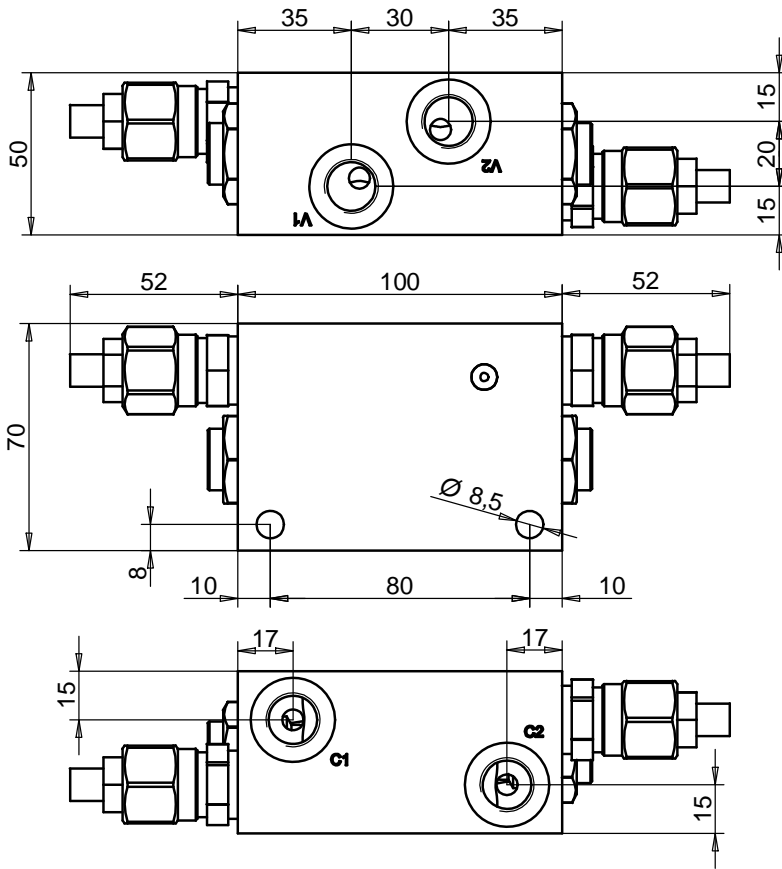
Features

Size	02
Max Pressure (bar)	250
Max Flow (lpm)	35
Pilot Ratio	7.1:1
Cracking Pressure (bar)	3
Ports	V1-V2: G 3/8 C1-C2: G 3/8

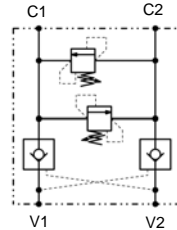
Ordering Code

LVDLPT 02

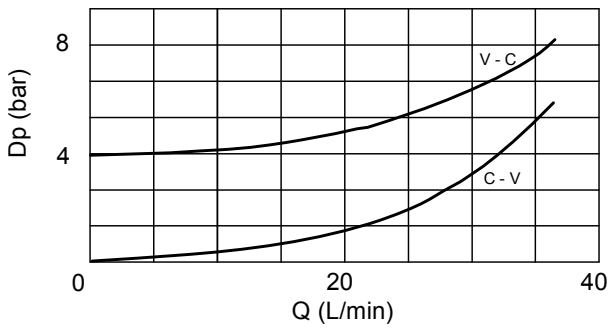
Dimensions



Hydraulic Symbol



Curves



Materials: Zinc plated steel body.

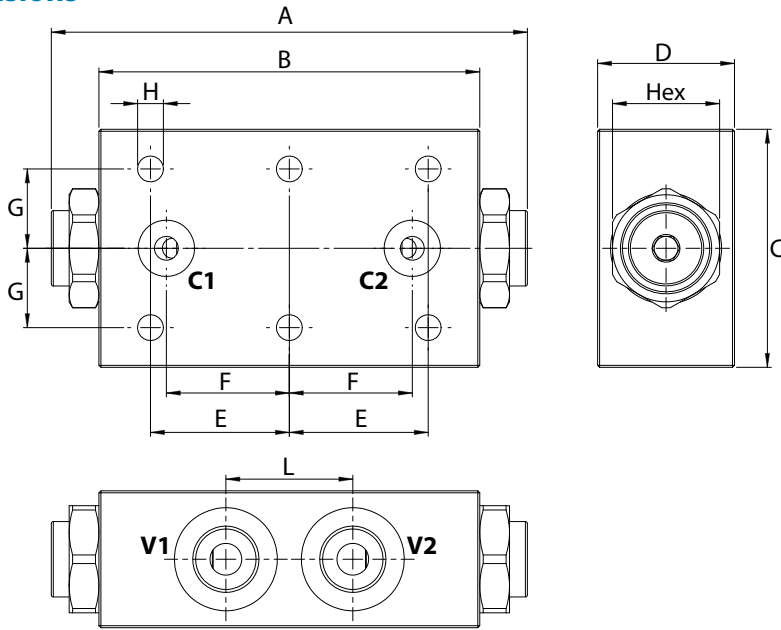
Features

Size	02
Max Pressure (bar)	250
Max Flow (lpm)	40
Pilot Ratio	7.1:1
Cracking Pressure (bar)	3
Ports	V1-V2: G 3/8 C1-C2: G 3/8

Ordering Code

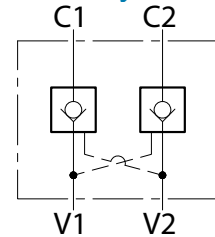
LVDLP 02

Dimensions



Size	V1-V2 BSP	A	B	C	C1-C2	D	E	F	G	H	L	Hex	Weight kg
01	1/4	113	90	50	Ø 5	30	35	26	20	6,5	32	22	0,43
15	3/8	113	90	50	Ø 5	30	35	26	20	6,5	32	22	0,43
02	3/8	113	96	60	Ø 6	35	35	31	20	6,5	32	27	0,60
25	1/2	113	96	60	Ø 6	35	35	31	20	6,5	32	27	0,60
03	1/2	140	110	70	Ø 10	35	40	32,5	20	8,5	34	30	0,89
04	3/4	220	165	90	Ø 14	50	67,5	52,5	25	10,5	50	41	2,50

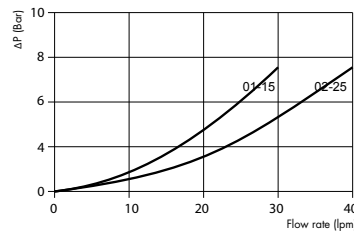
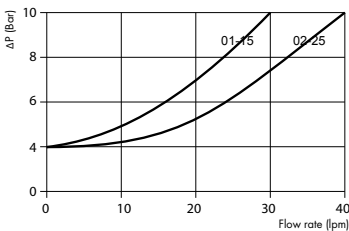
Hydraulic Symbol



Curves

V1 → C1
V2 → C2

C1 → V1
C2 → V2



Features

Size	01	15	02	25	03	04
Max Pressure (bar)	260	260	260	260	260	260
Max Flow (lpm)	20	20	35	35	60	100
Pilot Ratio	1:4	1:4	1:7	1:7	1:3,4	1:4
Cracking Pressure (bar)	4	4	4	4	3	8

Materials: Aluminium manifold, hardened steel inner parts.

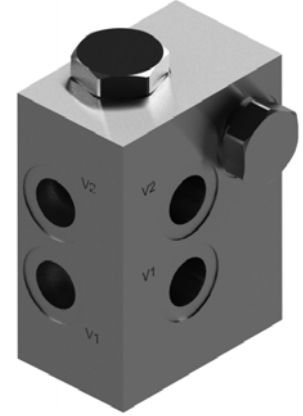
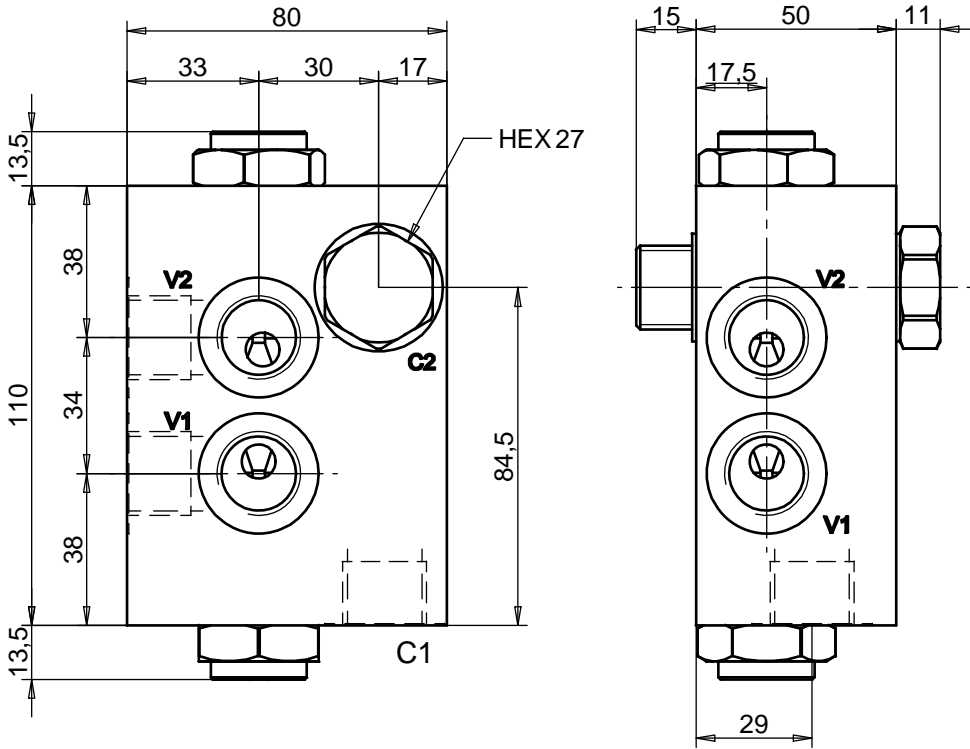
Ordering Code

LVDF **--**

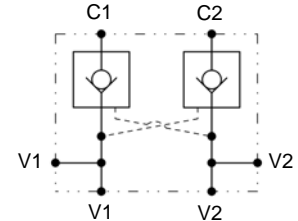
	Size BSP
01	1/4
15	3/8
02	3/8
25	1/2
03	1/2
04	3/4

Ordering Code Example: LVDFV15 = 3/8 BSP, 20 lpm.

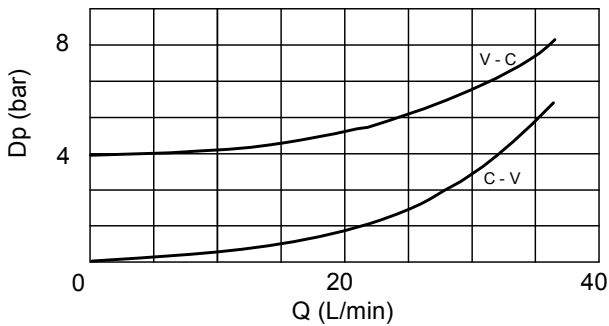
Dimensions



Hydraulic Symbol



Curves



Materials: Zinc plated steel cartridge, hardened steel inner parts.
Aluminium manifold.

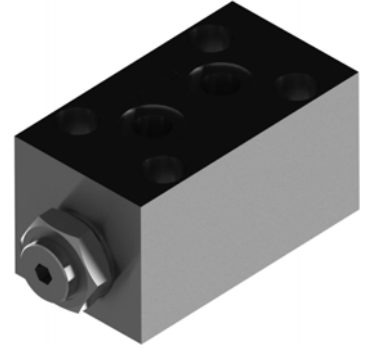
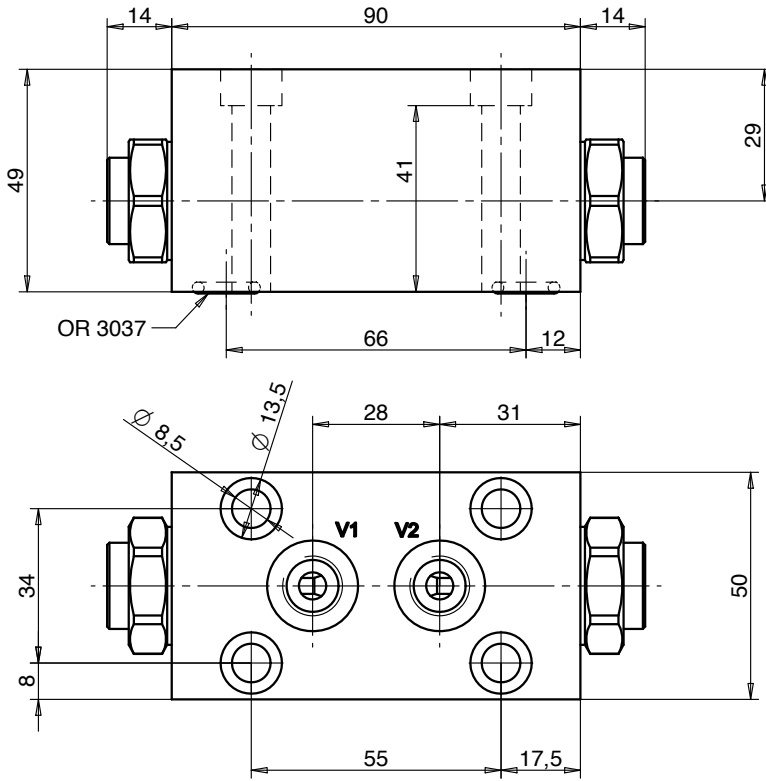
Features

Size	03
Max Pressure (bar)	350
Max Flow (lpm)	40
Pilot Ratio	4:1
Cracking Pressure (bar)	3
Ports	V1-V2-C1: 1/2 bsp C2: 1/2 bsp

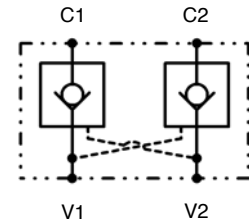
Ordering Code

LVDFLN 03

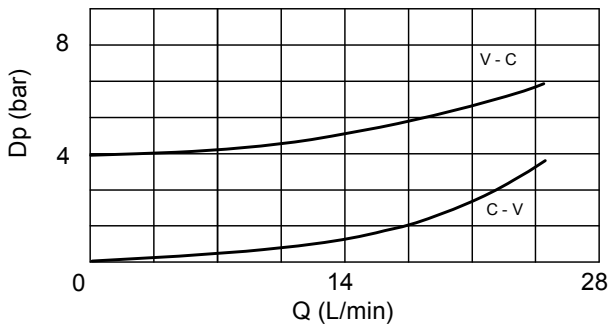
Dimensions



Hydraulic Symbol



Curves



Materials: Aluminium

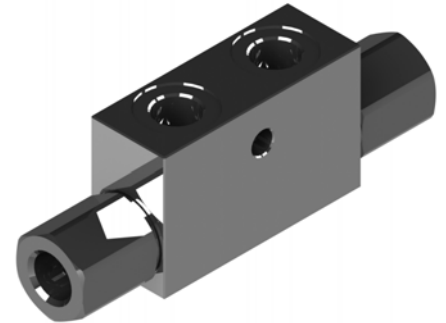
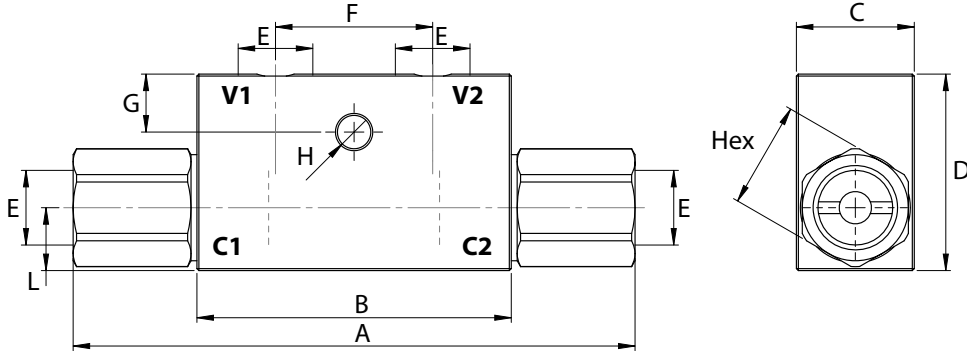
Features

Size	01
Max Pressure (bar)	250
Max Flow (lpm)	25
Pilot Ratio	4.7:1
Cracking Pressure (bar)	3
Ports	V1-V2: G 1/4 C1 - C2: $\phi 6$

Ordering Code

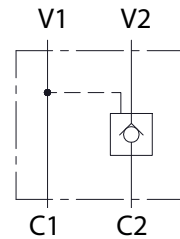
LVDFP 01

Dimensions

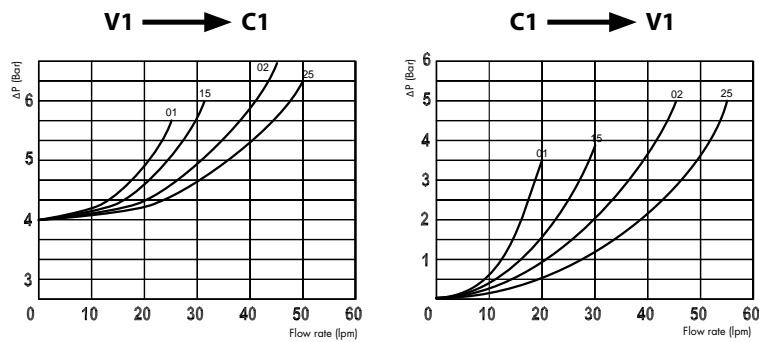


Size	A	B	C	D	E BSP	F	G	H	L	Hex	Weight kg
01	117	68	30	40	1/4	38	7	7	13	24	0,67
15	117	68	30	40	3/8	38	7	7	13	24	0,63
02	143	80	30	50	3/8	40	15	8,5	16	27	0,96
25	143	80	30	50	1/2	40	15	8,5	16	27	0,89

Hydraulic Symbol



Curves



Features

Size	01	15	02	25
Max Pressure (bar)	350	350	300	300
Max Flow (lpm)	25	30	45	50
Pilot Ratio	1:4.6	1:4.6	1:4	1:4
Cracking Pressure (bar)	4	4	4	4

Materials: Zinc plated steel body, hardened steel inner parts.

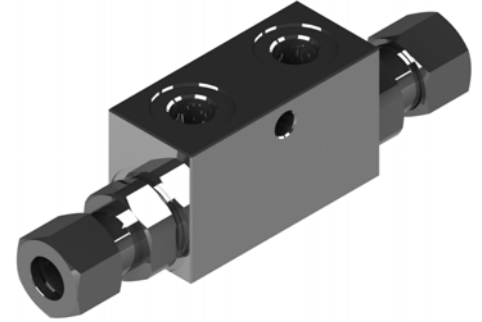
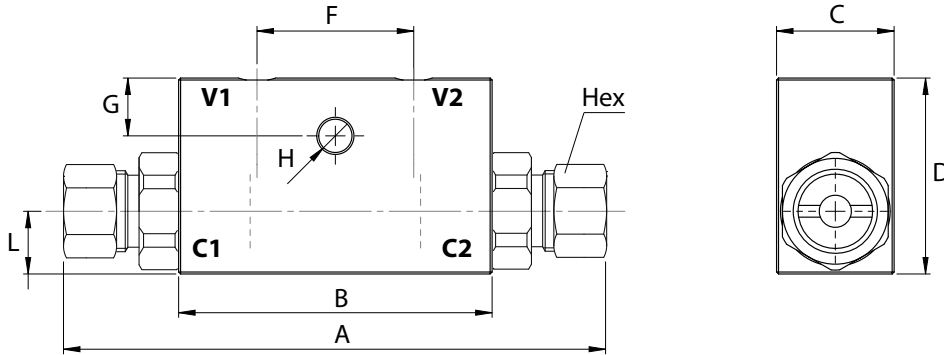
Ordering Code

LVST **--**

	Size BSP
01	1/4
15	3/8
02	3/8
25	1/2

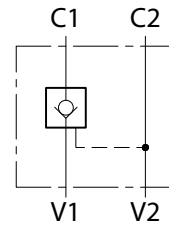
Ordering Code Example: LVST15 = 3/8 BSP, 30 lpm.

Dimensions

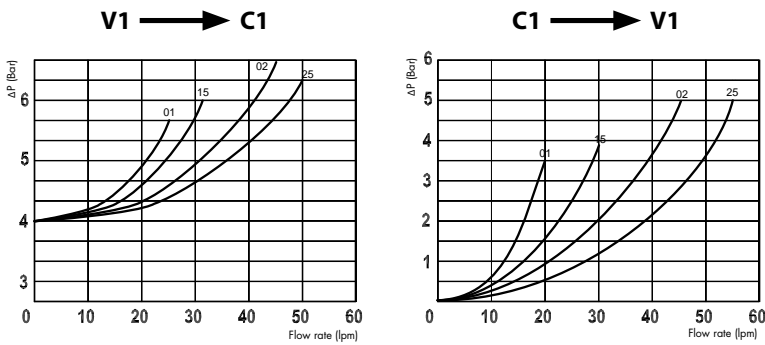


Size	A	B	C	D	V1-V2 BSP	C1-C2	F	G	H	L	Hex	Weight kg
01	138	68	30	40	1/4	12	38	7	7	13	22	0,65
15	138	68	30	40	3/8	12	38	7	7	13	22	0,62
02	166	80	30	50	3/8	15	40	15	8,5	16	27	0,95
25	166	80	30	50	1/2	15	40	15	8,5	16	27	0,90

Hydraulic Symbol



Curves



Features

Size	01	15	02	25
Max Pressure (bar)	350	350	300	300
Max Flow (lpm)	25	30	45	50
Pilot Ratio	1:4.6	1:4.6	1:4	1:4
Cracking Pressure (bar)	4	4	4	4

Materials: Zinc plated steel body, hardened steel inner parts.

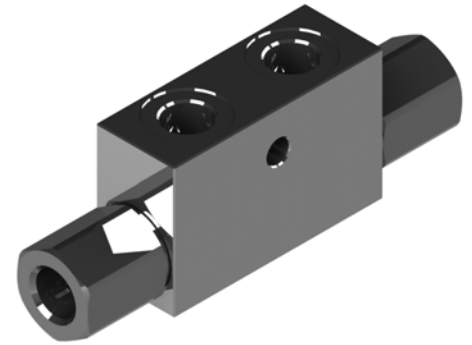
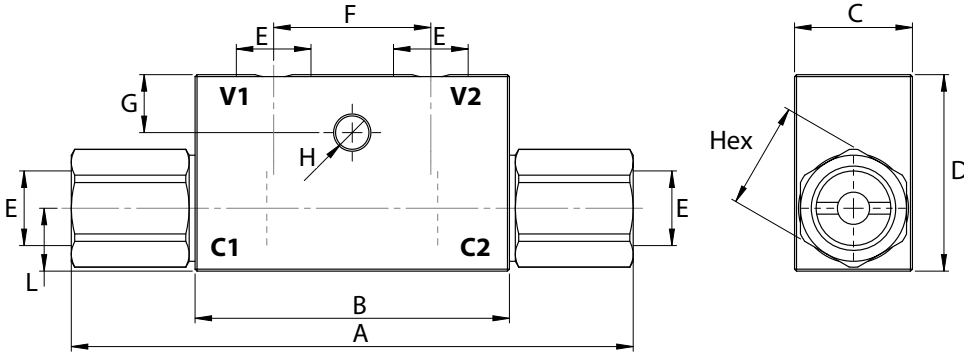
Ordering Code

LVST-DIN - -

	Size BSP
01	1/4
15	3/8
02	3/8
25	1/2

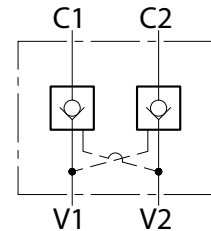
Ordering Code Example: LVST-DIN15 = 3/8 BSP - DIN2353 12l ported, 30 lpm.

Dimensions

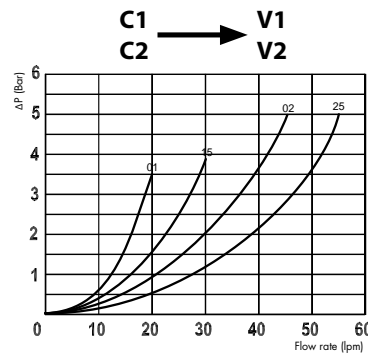
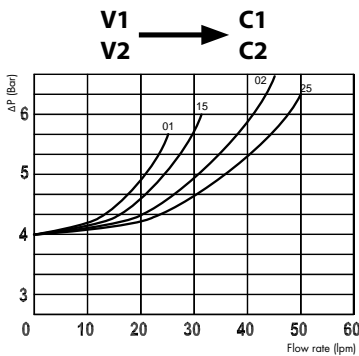


Size	A	B	C	D	E BSP	F	G	H	L	Hex	Weight kg
01	117	68	30	40	1/4	38	7	7	13	24	0,67
15	117	68	30	40	3/8	38	7	7	13	24	0,63
02	143	80	30	50	3/8	40	15	8,5	16	27	0,96
25	143	80	30	50	1/2	40	15	8,5	16	27	0,89

Hydraulic Symbol



Curves



Features

Size	01	15	02	25
Max Pressure (bar)	350	350	300	300
Max Flow (lpm)	25	30	45	50
Pilot Ratio	1:4.6	1:4.6	1:4	1:4
Cracking Pressure (bar)	4	4	4	4

Materials: Zinc plated steel body, hardened steel inner parts.

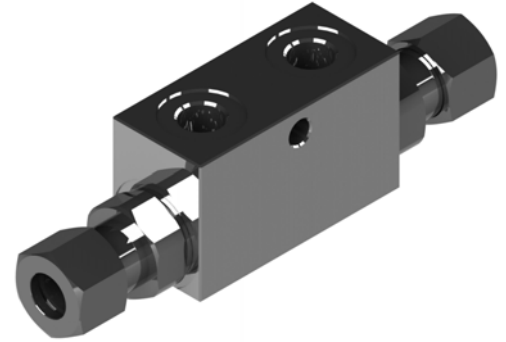
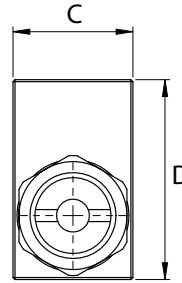
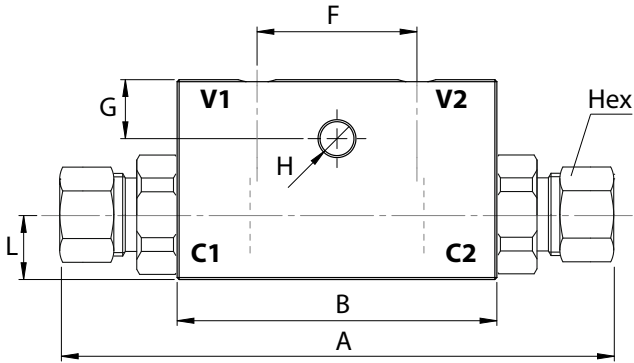
Ordering Code

LVDT **--**

	Size BSP
01	1/4
15	3/8
02	3/8
25	1/2

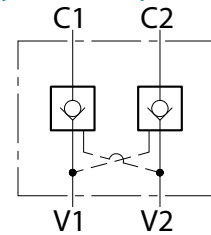
Ordering Code Example: LVDT15 = 3/8 BSP, 30 lpm.

Dimensions

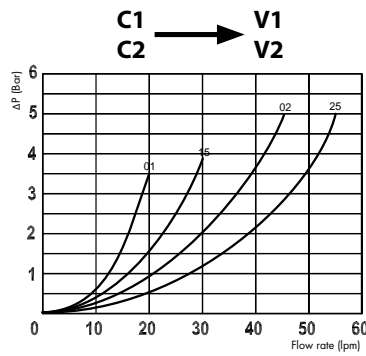
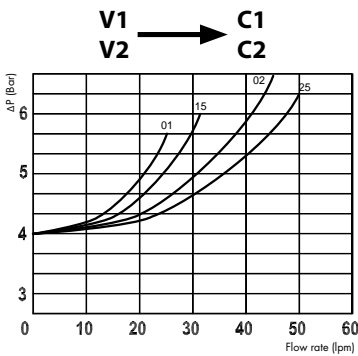


Size	A	B	C	D	V1-V2 BSP	C1-C2	F	G	H	L	Hex	Weight kg
01	138	68	30	40	1/4	12	38	7	7	13	22	0,65
15	138	68	30	40	3/8	12	38	7	7	13	22	0,62
02	138	80	30	50	3/8	15	40	15	8,5	16	27	0,95
25	138	80	30	50	1/2	15	40	15	8,5	16	27	0,90

Hydraulic Symbol



Curves



Features

Size	01	15	02	25
Max Pressure (bar)	350	350	300	300
Max Flow (lpm)	25	30	45	50
Pilot Ratio	1:4.6	1:4.6	1:4	1:4
Cracking Pressure (bar)	4	4	4	4

Materials: Zinc plated steel body, hardened steel inner parts.

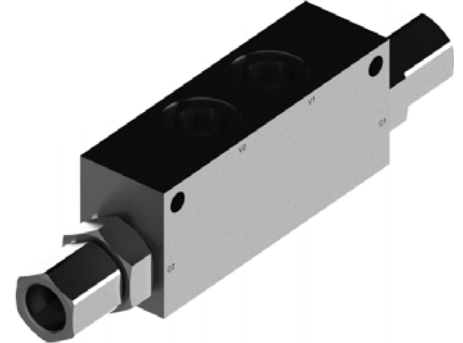
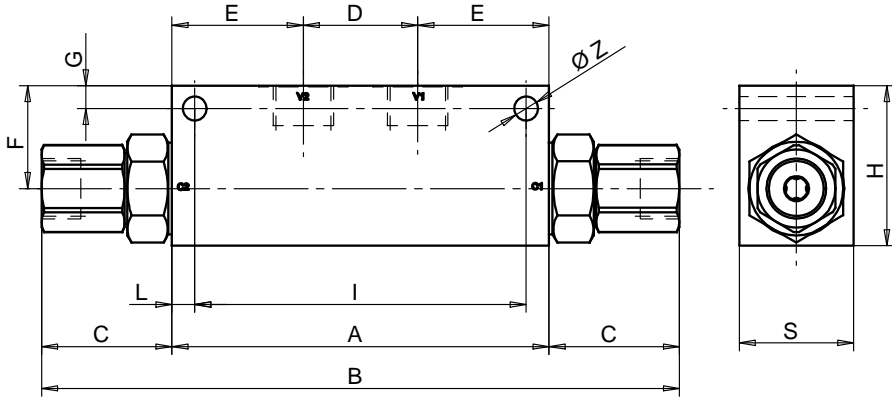
Ordering Code

LVDT-DIN --

	Size BSP
01	1/4
15	3/8
02	3/8
25	1/2

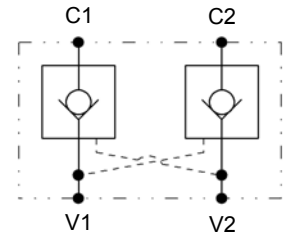
Ordering Code Example: LVDT-DIN15 = 3/8 BSP - DIN2353 12L ported, 30 lpm.

Dimensions

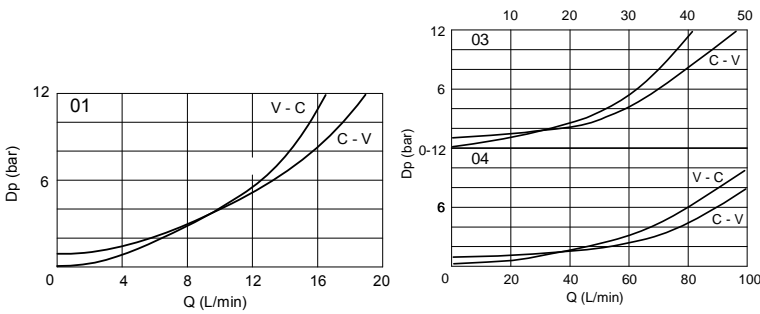


Size	V1-V2 C1-C2	A	B	C	D	E	F	G	H	I	L	S	Z
01	G 1/4	80	145	32,5	36	22	24	6	40	34	6	35	6,5
03	G 1/2	110	187	38,5	34	38	32	8	50	94	8	35	8,5
04	G 3/4	165	279	57	50	57,5	45	10	70	145	10	50	10,5

Hydraulic Symbol



Curves



Features

Max Pressure (bar)	350	
Max Flow (lpm)	100	
Pilot Ratio	Size	
	01	9:1
	03	6:1
04	3,6:1	

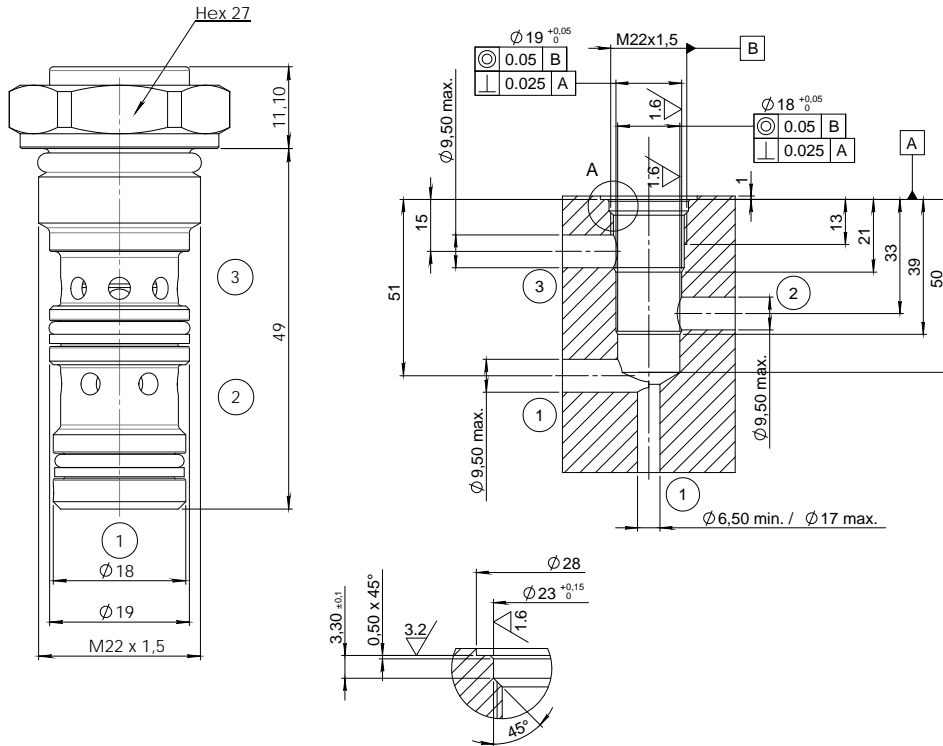
Materials: Zinc plated steel cartridge, hardened steel inner parts. Aluminium manifold.

Ordering Code

LVDTOC - -

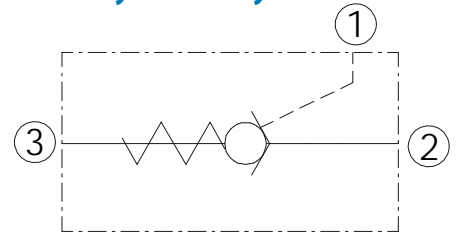
	Size BSP
01	1/4
03	1/2
04	3/4

Dimensions

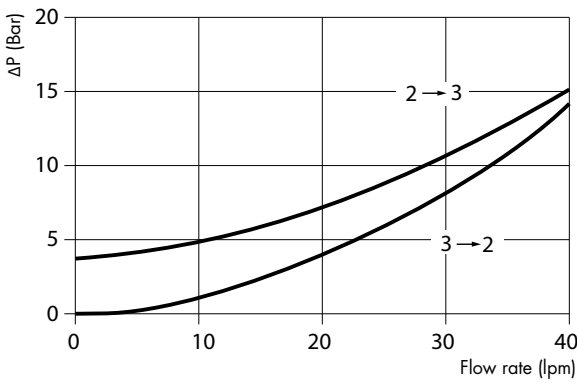


A	B	C	D	E	Weight kg
M22x1,5	19	18	49	9	0,100

Hydraulic Symbol



Curves



Features

Rated Flow	25 lpm
Max Pressure	315 bar
Pilot Ratio	3,4:1
Cracking Pressure	4 bar
Installation Torque	45-50 Nm

Materials: Zinc plated steel cartridge, hardened steel inner parts.

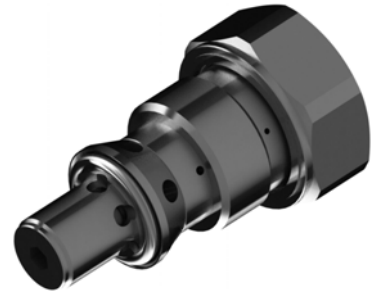
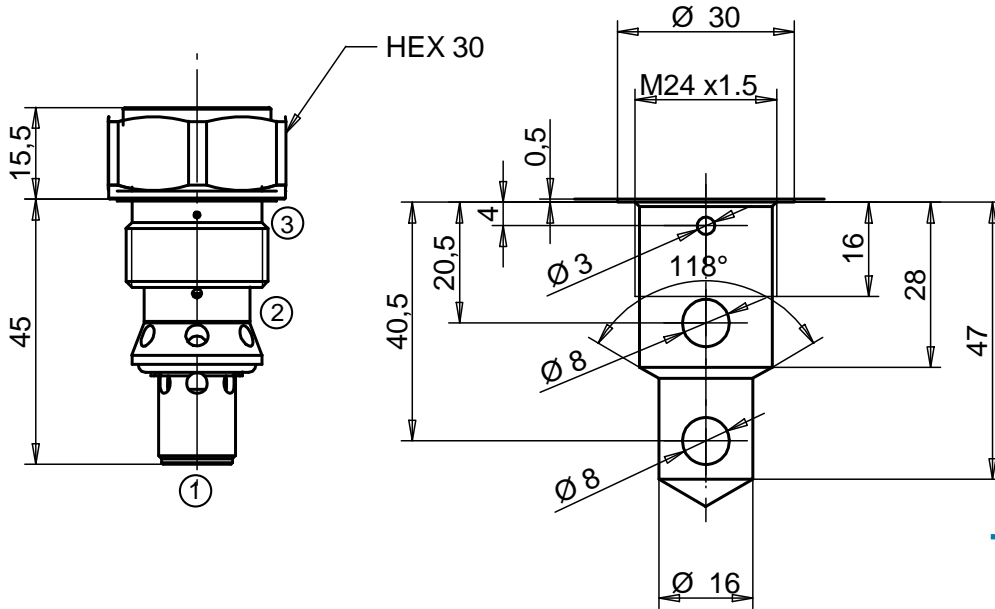
Ordering Code

LVPC 06 -

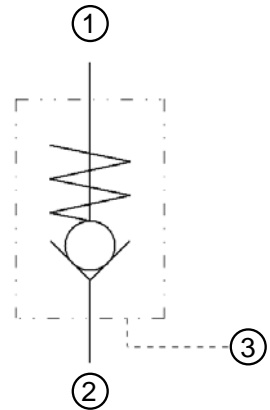
	Spring (bar)
	4
8	8

Ordering Code Example: LVPC06 - 4 bar Cracking Pressure.

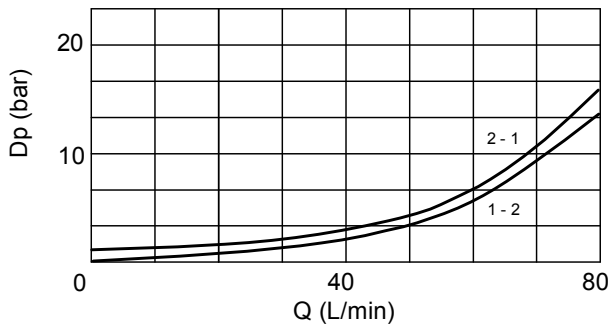
Dimensions



Hydraulic Symbol



Curves



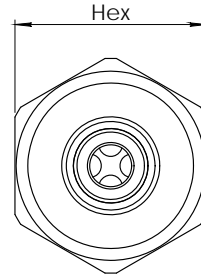
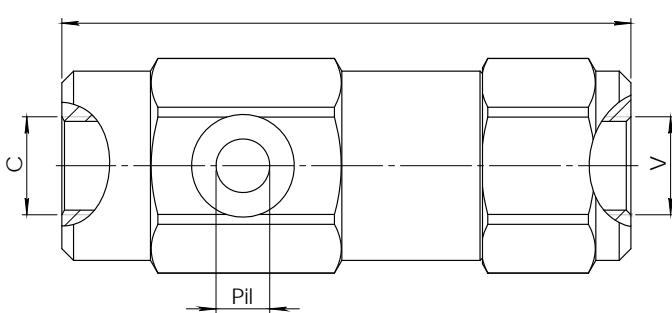
Features

Max Flow	80 lpm
Max Pressure	500 bar
Pilot Ratio	2,5:1
Cracking Pressure	1 bar
Installation Torque	85-100 Nm

Ordering Code

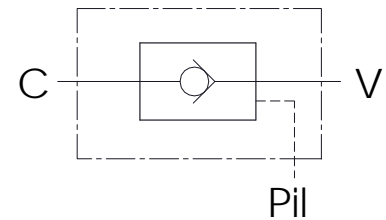
LVCPHW 80

Dimensions

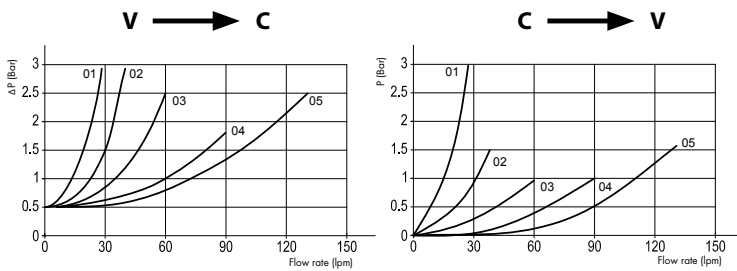


Size	A	C-V BSP	Pil BSP	Hex	Weight kg
01	103	1/4	1/4	36	0,71
02	112	3/8	1/4	40	0,98
03	122	1/2	1/4	42	1,09
04	145	3/4	1/4	55	2,32
05	164	1	1/4	55	2,44

Hydraulic Symbol



Curves



Features

Size	01	02	03	04	05
Max Pressure (bar)	350	350	350	300	260
Max Flow (lpm)	25	40	60	90	130
Pilot Ratio	1:9,4	1:6,2	1:4,2	1:4,4	1:3,5
Cracking Pressure (bar)	0,5	0,5	0,5	0,5	0,5

Materials: Zinc plated steel body, hardened steel inner parts.

Ordering Code

LVPL

--

	Size BSP
01	1/4
02	3/8
03	1/2
04	3/4
05	1

Ordering Code Example: LVPL03 = 1/2 BSP.