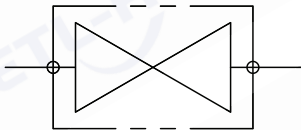
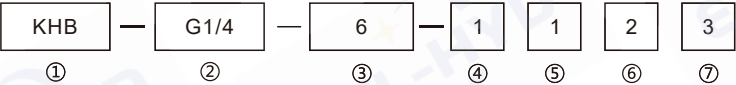




图形符号/SYMBOL:

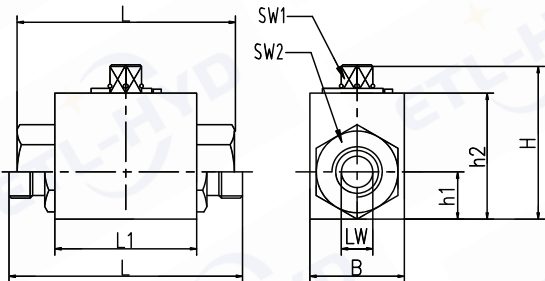


型号/MODEL CODE:

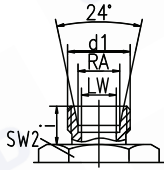
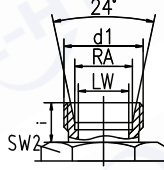
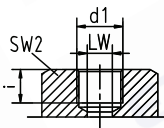


- ① 球阀系列代号/Ball valve series code: KHB型/KHB type  
② 连接螺纹尺寸/Connection thread dimension: BBSP、NPT、L、S、JB984-77  
③ 公称通径/Nominal diameter: 4、6、8、10、13、16、20、25、32、40、50  
④ 阀体和接头材料/Body and joint material:  
1、45号钢/45#Iron 2、不锈钢304/304#Stainless steel 3、不锈钢316/316#Stainless steel  
⑤ 球体和阀杆材料/Ball and the valve stem material:  
1、45号钢/45#Iron 2、不锈钢304/304#Stainless steel 3、不锈钢316/316#Stainless steel  
⑥ 球座密封材料/Ball sealing material:  
2、POM/聚甲醛 3、PTFE/聚四氟乙烯  
⑦ 阀杆和接头密封材料/Valve stem and joint seal material:  
2、PTFE/聚四氟乙烯 3、NBR/丁腈橡胶 4、FKM 氟橡胶

外形尺寸/OVER DIMENSION:

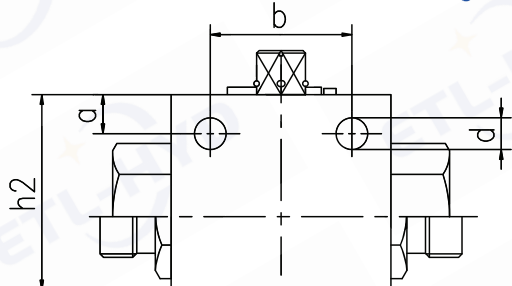


| 连接口略图<br>/Connection | 型号<br>/Type | 最大压力(bar)<br>/Max. Pressure | DN<br>(mm) | LW | RA | d1      | i  | L   | L1  | B   | H   | h1 | h2  | SW1 | SW2 |
|----------------------|-------------|-----------------------------|------------|----|----|---------|----|-----|-----|-----|-----|----|-----|-----|-----|
|                      | KHB-M16x1.5 | 500                         | 6          | 6  | 11 | M16x1.5 | 11 | 69  | 40  | 26  | 45  | 14 | 33  | 9   | 22  |
|                      | KHB-M22x1.5 | 500                         | 8          | 8  | 16 | M22x1.5 | 12 | 76  | 42  | 32  | 49  | 16 | 36  | 9   | 27  |
|                      | KHB-M27x1.5 | 500                         | 10         | 10 | 20 | M27x1.5 | 12 | 76  | 42  | 32  | 49  | 16 | 36  | 9   | 27  |
|                      | KHB-M30x1.5 | 400                         | 16         | 15 | 24 | M30x1.5 | 13 | 84  | 48  | 38  | 61  | 19 | 45  | 12  | 32  |
|                      | KHB-M36x2   | 315                         | 20         | 20 | 30 | M36x2   | 15 | 103 | 60  | 48  | 70  | 25 | 55  | 14  | 41  |
|                      | KHB-M42x2   | 315                         | 25         | 25 | 35 | M42x2   | 18 | 116 | 65  | 57  | 79  | 29 | 64  | 14  | 50  |
|                      | KHB-M52x2   | 315                         | 32         | 30 | 40 | M52x2   | 20 | 149 | 84  | 75  | 101 | 38 | 84  | 17  | 60  |
|                      | KHB-M60x2   | 315                         | 40         | 38 | 45 | M60x2   | 22 | 174 | 91  | 85  | 112 | 42 | 95  | 17  | 70  |
|                      | KHB-G1/8    | 500                         | 4          | 6  | -  | G1/8    | 14 | 69  | 40  | 25  | 45  | 14 | 33  | 9   | 22  |
|                      | KHB-G1/4    | 500                         | 6          | 6  | -  | G1/4    | 14 | 69  | 40  | 25  | 45  | 14 | 33  | 9   | 22  |
|                      | KHB-G3/8    | 500                         | 10         | 10 | -  | G3/8    | 14 | 72  | 42  | 32  | 49  | 16 | 36  | 9   | 27  |
|                      | KHB-G1/2    | 500                         | 13         | 12 | -  | G1/2    | 14 | 83  | 47  | 35  | 49  | 18 | 38  | 9   | 30  |
|                      | KHB-G1/2    | 400                         | 16         | 15 | -  | G1/2    | 16 | 83  | 48  | 38  | 61  | 19 | 45  | 9   | 32  |
|                      | KHB-G3/4    | 315                         | 20         | 20 | -  | G3/4    | 18 | 95  | 60  | 48  | 70  | 25 | 55  | 12  | 41  |
|                      | KHB-G1      | 315                         | 25         | 25 | -  | G1      | 21 | 113 | 65  | 57  | 79  | 29 | 64  | 12  | 50  |
|                      | KHB-G1 1/4  | 315                         | 32         | 32 | -  | G1 1/4  | 22 | 110 | 84  | 75  | 101 | 38 | 84  | 14  | 60  |
|                      | KHB-G1 1/2  | 315                         | 40         | 38 | -  | G1 1/2  | 24 | 130 | 91  | 85  | 112 | 43 | 95  | 14  | 70  |
|                      | KHB-G2      | 315                         | 50         | 48 | -  | G2      | 26 | 140 | 100 | 104 | 131 | 52 | 113 | 14  | 90  |

| 连接口略图<br>/Connection  | 型号<br>/Type  | 最大压力(bar)<br>/Max. Pressure | DN<br>(mm) | LW | RA | d1       | i  | L   | L1  | B   | H   | h1 | h2  | SW1 | SW2 |
|---|--------------|-----------------------------|------------|----|----|----------|----|-----|-----|-----|-----|----|-----|-----|-----|
|    | KHB-06LR     | 500                         | 4          | 4  | 6  | M12x1.5  | 10 | 67  | 40  | 26  | 45  | 14 | 33  | 9   | 22  |
|   | KHB-08LR     | 500                         | 6          | 6  | 8  | M14x1.5  | 10 | 67  | 40  | 26  | 45  | 14 | 33  | 9   | 22  |
|   | KHB-10LR     | 500                         | 8          | 8  | 10 | M16x1.5  | 11 | 74  | 42  | 32  | 49  | 16 | 36  | 9   | 27  |
|   | KHB-12LR     | 500                         | 10         | 10 | 12 | M18x1.5  | 11 | 74  | 42  | 32  | 49  | 16 | 36  | 9   | 27  |
|   | KHB-15LR     | 500                         | 13         | 12 | 15 | M22x1.5  | 13 | 82  | 47  | 35  | 53  | 18 | 38  | 9   | 30  |
|   | KHB-15LR     | 500                         | 12         | 12 | 15 | M22x1.5  | 12 | 82  | 48  | 38  | 61  | 19 | 45  | 9   | 32  |
|   | KHB-18LR     | 500                         | 13         | 12 | 18 | M26x1.5  | 13 | 82  | 47  | 35  | 53  | 18 | 38  | 9   | 30  |
|   | KHB-18LR     | 400                         | 16         | 15 | 18 | M26x1.5  | 12 | 82  | 48  | 38  | 61  | 19 | 45  | 9   | 32  |
|   | KHB-22LR     | 315                         | 20         | 19 | 22 | M30x2    | 14 | 101 | 60  | 48  | 70  | 25 | 55  | 9   | 41  |
|   | KHB-28LR     | 315                         | 25         | 25 | 28 | M36x2    | 14 | 108 | 65  | 57  | 79  | 29 | 64  | 12  | 50  |
|   | KHB-35LR     | 315                         | 32         | 30 | 35 | M45x2    | 16 | 141 | 84  | 75  | 101 | 38 | 84  | 14  | 60  |
|   | KHB-42LR     | 315                         | 40         | 36 | 42 | M52x2    | 16 | 162 | 91  | 85  | 112 | 43 | 95  | 14  | 70  |
|   | KHB-08SR     | 500                         | 4          | 5  | 8  | M16x1.5  | 12 | 73  | 40  | 26  | 45  | 14 | 33  | 9   | 22  |
|   | KHB-10SR     | 500                         | 6          | 6  | 10 | M18x1.5  | 12 | 73  | 40  | 26  | 45  | 14 | 33  | 9   | 22  |
|   | KHB-12SR     | 500                         | 8          | 8  | 12 | M20x1.5  | 12 | 76  | 42  | 32  | 49  | 16 | 36  | 9   | 27  |
|   | KHB-14SR     | 500                         | 10         | 10 | 14 | M22x1.5  | 14 | 80  | 42  | 32  | 49  | 16 | 36  | 9   | 27  |
|   | KHB-16SR     | 500                         | 13         | 12 | 16 | M24x1.5  | 14 | 86  | 47  | 35  | 53  | 18 | 38  | 9   | 30  |
|   | KHB-16SR     | 500                         | 12         | 12 | 16 | M24x1.5  | 14 | 86  | 48  | 38  | 61  | 19 | 45  | 9   | 32  |
|   | KHB-20SR     | 500                         | 13         | 13 | 20 | M30x2    | 16 | 90  | 47  | 35  | 53  | 18 | 38  | 9   | 30  |
|   | KHB-20SR     | 400                         | 16         | 15 | 20 | M30x2    | 16 | 90  | 48  | 38  | 61  | 19 | 45  | 9   | 32  |
|   | KHB-25SR     | 315                         | 20         | 20 | 25 | M36x2    | 18 | 109 | 60  | 48  | 70  | 25 | 55  | 12  | 41  |
|   | KHB-30SR     | 315                         | 25         | 25 | 30 | M42x2    | 20 | 120 | 65  | 57  | 79  | 29 | 64  | 12  | 50  |
|   | KHB-38SR     | 315                         | 32         | 30 | 38 | M52x2    | 22 | 153 | 84  | 75  | 101 | 38 | 84  | 14  | 60  |
|  | KHB-NPT1/8   | 500                         | 4          | 6  | -  | NPT1/8   | 11 | 69  | 35  | 26  | 45  | 14 | 33  | 9   | 22  |
|   | KHB-NPT1/4   | 500                         | 6          | 6  | -  | NPT1/4   | 11 | 69  | 35  | 26  | 45  | 14 | 33  | 9   | 22  |
|   | KHB-NPT3/8   | 500                         | 10         | 10 | -  | NPT3/8   | 11 | 72  | 42  | 32  | 49  | 16 | 36  | 9   | 27  |
|   | KHB-NPT1/2   | 500                         | 13         | 12 | -  | NPT1/2   | 14 | 83  | 47  | 35  | 49  | 18 | 38  | 9   | 30  |
|   | KHB-NPT1/2   | 400                         | 16         | 15 | -  | NPT1/2   | 14 | 83  | 48  | 38  | 61  | 19 | 45  | 9   | 32  |
|   | KHB-NPT3/4   | 315                         | 20         | 20 | -  | NPT3/4   | 18 | 95  | 60  | 48  | 70  | 25 | 55  | 12  | 41  |
|   | KHB-NPT1     | 315                         | 25         | 25 | -  | NPT1     | 21 | 113 | 65  | 57  | 79  | 29 | 64  | 12  | 50  |
|   | KHB-NPT1 1/4 | 315                         | 32         | 32 | -  | NPT1 1/4 | 22 | 110 | 84  | 75  | 101 | 38 | 84  | 14  | 60  |
|   | KHB-NPT1 1/2 | 315                         | 40         | 38 | -  | NPT1 1/2 | 24 | 130 | 91  | 85  | 112 | 43 | 95  | 14  | 70  |
|   | KHB-NPT2     | 315                         | 50         | 48 | -  | NPT2     | 26 | 140 | 100 | 104 | 113 | 53 | 113 | 14  | 90  |

## VH2V

侧面通孔定位图 /With side mounting hole



| DN  | h2 | b    | a   | d   |
|-----|----|------|-----|-----|
| 4-8 | 3  | 26   | 5   | 4.5 |
| 10  | 36 | 32   | 5   | 6.5 |
| 13  | 38 | 37.5 | 4.8 | 6.5 |
| 16  | 46 | 37.5 | 5   | 6.5 |
| 20  | 5  | 45   | 6.5 | 6.5 |
| 25  | 60 | 55   | 6   | 6.5 |