

LCBBB/LCBBC/LCBBD

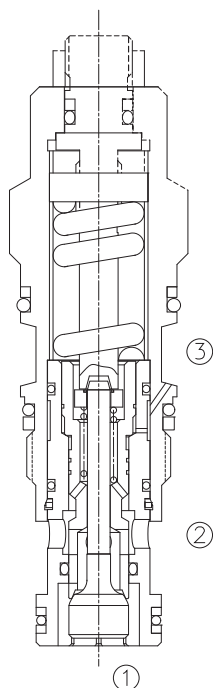
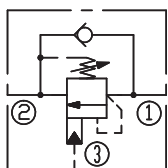
平衡阀

半限流型 /Semi-Restrictive

说明 DESCRIPTION

A cartridge-style semi-restrictive counterbalance valve
半限流型平衡阀

SYMBOL



工作 OPERATION

Counterbalance valves with pilot assist are meant for control on overrunning load. The check valve allows free flow from port ② to port ① while a direct-acting, pilot-assisted relief valve controls flow from port ① to port ② . Pilot assist at port ③ lowers the effective setting of the relief valve at a rate determined by the pilot ratio.

带先导开启平衡阀用于控制超越负载工况。油液从②口到①口单向自由流动；油液经直动，先导辅助从①口溢流到②口，③口是溢流辅助控制口，按控制比降低溢流功能的有效设定值。

特性 FEATURES

- Counterbalance valves should be set at least 1.3 times the maximum load induced pressure.

最大设定压力至少为最大负载压力的 1.3 倍。

- Full clockwise setting is less than 14 bar.

完全释压情况下，设定低于 14bar。

- Backpressure at port ② adds to the effective relief setting at a ratio of 1 plus the pilot ratio times the backpressure.

②口的背压按“控制比 +1”的倍数加到溢流阀的设定值上即增加值 = (1+ 控制比) × 压力值。

- Reseat exceeds 85% of set pressure when the valve is standard set. Setting lower than the standard set pressure may result in lower reseal percentages.

标准设定时，闭合压力值大于设定压力值的 85%；低于标准设定，则闭合压力值的百分比相应降低。

- Factory pressure setting established at 30cc/min(2 in³/min).

工厂的设定是指当溢流阀开启（流量为 30cc/min）时的压力。

技术参数 SPECIFICATIONS

最大设定值(Max. Setting): 280 bar(LCBBB/LCBBC)
350 bar(LCBBD)

最大负载(Max. Recommended Load Pressure at Max. Setting): 215 bar(LCBBB/LCBBC)
270 bar(LCBBD)

流量(Flow): See PRESSURE DROP VS.FLOW graph.

内泄漏(Internal Leakage): 5 drops/min(滴/分).

控制比(Pilot Ratio): (LCBBB) 1.5:1; (LCBBC) 3:1 (LCBBD) 4.5:1

温度(Temperature): -40°F to +250°F(-40°C to +120°C)

过滤(Filtration): See page (参见) N-1

油液(Fluids): Mineral-based fluids with viscosities of 7.4 to 420 cSt.(矿物油粘度)

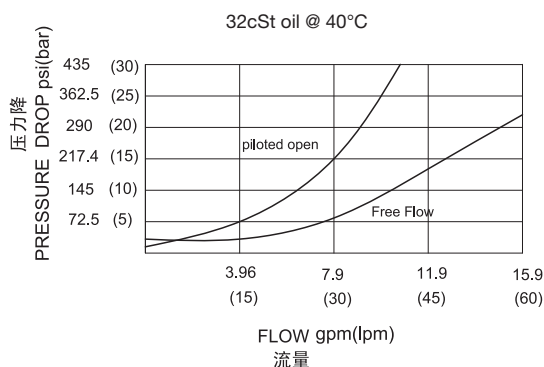
插孔(Cavity): SUN T-11A, See page M-6

阀块材料(Body Material):

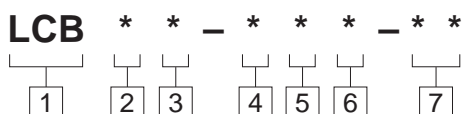
6061-T6 aluminum alloy rated to 207bar, Steel & Ductile iron rated to 350bar

6061-T6铝,允许使用最大压力207bar 钢和球铁允许使用最大压力350bar

压力 – 流量曲线 PRESSURE DROP VS.FLOW



订货代号 TO ORDER



1 功能
LCB= 平衡阀
Counterbalance Cartridge Valve

2 流量 Flow
B=40L/min

3 控制比 Pilot Ratio
B=1.5:1; C=3:1; D=4.5:1

4 控制方式 Control
L=Standard Screw Adjustment

5 弹簧调压范围 Spring Ranges

6 油封 Seal Kits
N= 丁晴橡胶 Buna N
V= 氟橡胶 Viton

7 阀块油口 Body Porting
空白 Blank= 不带阀块 None
6T=SAE6
8T=SAE8
3G=G 3/8
4G=G 1/2

弹簧调压 LCBBB/LCBCB
H=1000-4000psi(70-280bar)
Preset:3000psi(210bar)(Check:1.7bar)
I=400-1500psi(28-105bar)
Preset:1000psi(70bar)(Check:1.7bar)
A=1000-4000psi(70-280bar)
Preset:3000psi(210bar)(Check:0.3bar)
B=400-1500psi(28-105bar)
Preset:1000psi(70bar)(Check:0.3bar)

弹簧调压 LCBBB
J=2000-5000psi(140-350bar)
Preset:3000psi(210bar)(Check:1.7bar)
K=1000-2500psi(70-175bar)
Preset:2000psi(140bar)(Check:1.7bar)
C=2000-5000psi(140-350bar)
Preset:3000psi(210bar)(Check:0.3bar)
D=1000-2500psi(70-175bar)
Preset:2000psi(140bar)(Check:0.3bar)

※ 阀块详见章节 K-17—K-22
其它螺纹油口也是可选择的
Other Porting is Available

安装尺寸 INSTALLATION DIMENSIONS

Unit=Millimeters

