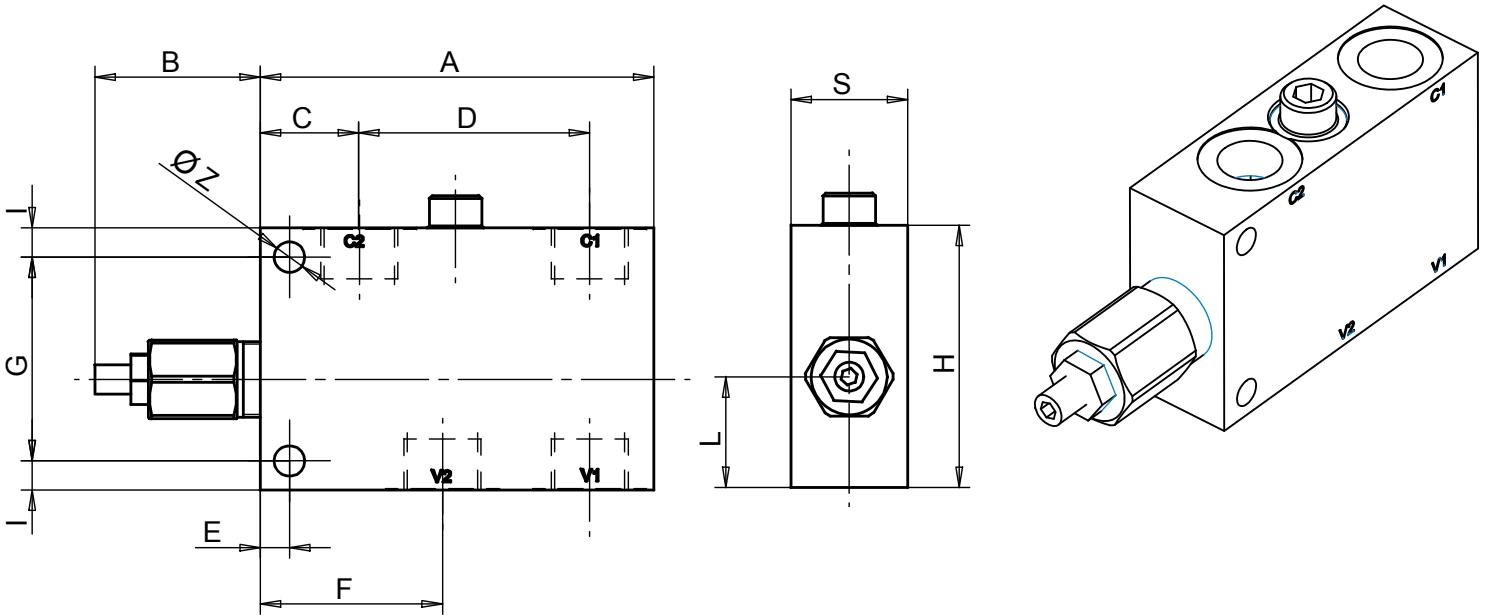
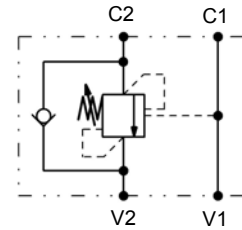


Dimensions

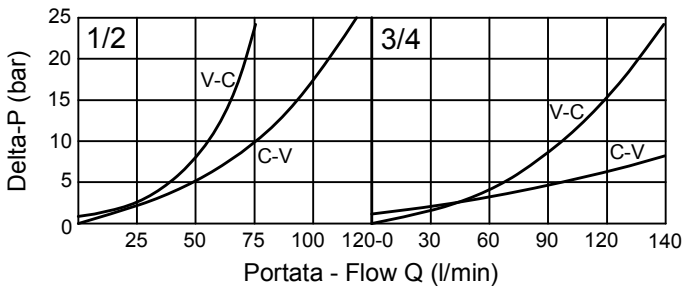


Size	A	B	C	D	E	F	G	H	I	L	S	Z	V1-V2 C1-C2
03	113	60	32,5	62,5	10	54,5	54	70	8	32	35	8,5	G 1/2
04	135	60	34	79	10	62,5	70	90	10	38	40	10,5	G 3/4

Hydraulic Symbol



Curves



Features

Std. Pressure range	100 - 350 bar	
Max Pressure	250 bar	
Pilot Ratio	3,2:1	8,2:1
1/2	Standard	On request
3/4	On request	Standard

Materials: Zinc plated steel cartridge, hardened steel inner parts.
Aluminium manifold.

Ordering Code

CBSL

--

-

Port Size BSP

03	1/2
04	3/4

Pilot Ratio

3	3,2 : 1
8	8,2 : 1

Ordering Code Example: CBSL033 - 1/2" BSP Ports - 100-350 bar setting range - 3,2 : 1 Pilotratio.